

# EMERSON & MATKIN

## 2-71 GENERATORS "THE DEUCE"

950 S. Main / P.O. Box 4885  
Pocatello, ID 83205

Ph: (208) 234-4436 & Fax: (208) 234-4724

Toll Free: 800-387-4972

[www.emerson2-71gm.com](http://www.emerson2-71gm.com)

### AUTO TRANSFER SWITCH

*Rugged contactor-based  
double throw switch  
Robust Full-featured  
Controller Board  
Galvanized Steel Enclosure  
Externally accessible  
Exerciser Clock and LED's  
Modular design for  
easy service & replacement  
Full 5 Year Warranty*

2-71ATSN1 - **Indoor** Switch  
\$1395.00

2-71ATSN3 - **Outdoor** Switch  
\$1495.00



#### Engineered for Highest Quality at Lowest Cost

Engineers had one clear design goal for our new **Automatic Transfer Switch**: Find that precise point at which the highest possible quality and the most needed features would combine to provide the lowest overall installed cost.

#### Transfer Switch Controls That Last

Employing all proven controls expertise they developed new, ruggedly reliable controls that set new standards for simplicity, reliability, and durability including:

- **Integrated voltage and frequency sensing**
- **Adjustable transfer delays instead of fixed settings**
- **All timing functions are easily configurable through use of on-board potentiometers.**
- **Fused remote start contact relays**
- **Adjustable drop-out & pickup values for voltage & frequency**
- **Conformal coating to protect against moisture**

The new **Automatic Transfer Switch** controls are so reliable, in fact, that they are backed by the longest warranty in the business. **5 full years.**

#### Save Your Profits and Your Reputation

Keep your profits and your reputation from being eaten away by costly service issues caused by transfer switches choked with too many bells and whistles - or by switches that can't stand the test of time. Install the **Automatic Transfer Switch**. They will *make* you money now and *save* you money in the long run.

#### One-Stop Toll-Free Technical Support

Buying all your power control products from Emerson & Matkin has another very big advantage: one toll-free number for all your technical support questions. Transfer Switches - Panels - Controllers. And when you call Emerson & Matkin you get full access to the knowledge and trained technicians

#### THE BEST USER INTERFACE ON THE MARKET

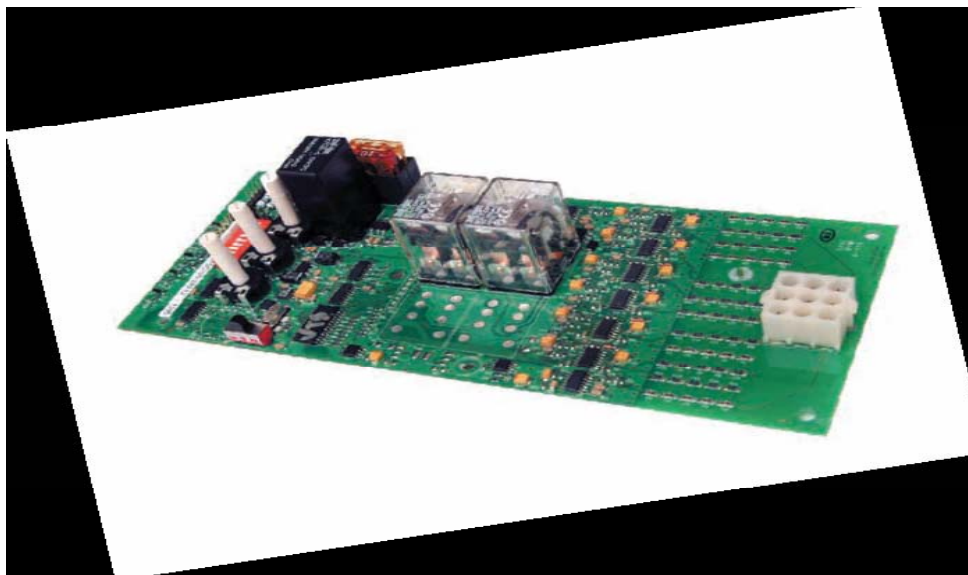
Emerson & Matkin's new exclusive exerciser clock gives you full control over day and time.



It is, hands down, the most flexible and easiest-to-use timer on the market today. And, best of all, the exerciser clock and indicator LED's are both accessible from outside the transfer switch. No need to open the door. Even with a NEMA 3 enclosure.

NEMA 1 & 3	VOLTAGE	UL Withsand Ratings	Poles	Enclosure	Lbs	Lug Capacities
100 Amp	120/240	22,000 A	2	16"x14"x6"	25	1/0 to 14AWG
200 Amp	120/240	25,000 A	2	24"x20"x6"	55	1/0 to 250MCM
400 Amp	120/240,120/208, 277/480	10,000 A	2-3-4	48"x30"x12"	190	4 to 600MCM
600 Amp	120/240,120/208, 277/480	12,000 A	2-3-4	60"x30"x24"	425	2 to 600MCM
1000 Amp	120/240,120/208, 277/480	20,000 A	2-3-4	60"x30"x24"	510	2 to 600MCM
1250 Amp	120/240,120/208, 277/480	25,000 A	2-3-4	60"x30"x24"	542	2 to 600MCM

<b>200ATSDG-1/200ATSDG-3 AUTOMATIC TRANSFER SWITCH CONTROLLER SPECIFICATIONS</b>			
Operating Voltage	12/24 VDC DC operating voltage is delivered to the 200ATSDG-1/200ATSDG-3 transfer switch controller from the generator starting batteries ensuring that the controller is continuously powered and ready to control power to load. Factory jumpers to be installed (12VDC) or removed (24VDC) (9VDC min- 30VDC max)		
Remote Start Contact Rating	10 A Maximum		
Control Setting Ranges	Function	Adjustable Ranges	Factory Setting
Controller Adjustments:	Time Delay Engine Start	0-32 sec	10 sec
Timing functions of the 200ATSDG-1/200ATSDG-3 controller are easily configurable through the use of on board potentiometers.	Time Delay Normal to Emergency	0-64 sec	10 sec
	Time Delay Emergency to Normal	0-256 sec	256 sec
	Time Delay to Engine Cool Down	0-256 sec	256 sec
	Time Delay to Neutral (600A & Above)	0-64 sec	10 sec
	Operating Temperature: -4 to +185	Normal & Emergency under Voltage Phase to neutral sensing (+/- 2% accuracy)	Nominal P-N VAC Dropout: 82-89% Pickup: 87-94%
Operating Humidity: 0-95% Relative, Non Condensing	Normal & Emergency Over Volt (+/- 2% accuracy)	Nominal P-N VAC Dropout: 118-111% Pickup: 113-106%	Nominal P-N VAC Dropout: 118% Pickup: 113%
Test Switch Included	Normal & Emergency Under Frequency (+/- 1% accuracy)	Nominal P-N Frequency Dropout:88-95%	Nominal P-N Frequency Dropout:88%
Switch can be operated manually by means of supplied handle.	Normal & Emergency Over Frequency (+/- 1% accuracy)	Nominal P-N Frequency Dropout: 105-112%	Nominal P-N Frequency Dropout:112%



**EMERSON & MATKIN**  
2-71 GENERATORS "THE DEUCE"

950 S. Main / P.O. Box 4885  
Pocatello, ID 83205  
Ph: (208) 234-4436 & Fax: (208) 234-4724  
Toll Free: 800-387-4972  
[www.emerson2-71gm.com](http://www.emerson2-71gm.com)

rev 2/09